



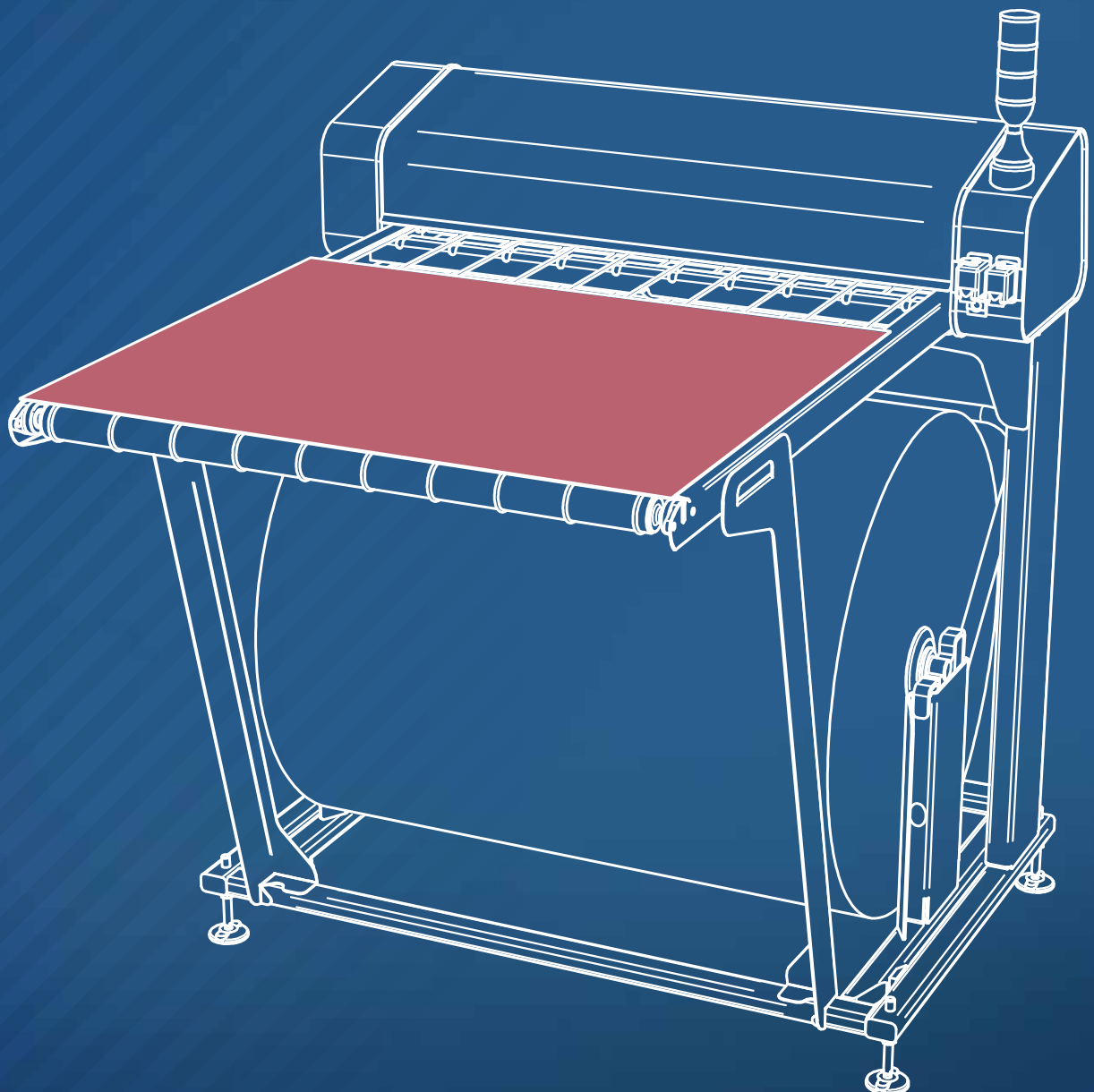
# EXCALIBUR<sup>®</sup>

TIE-SHEET DISPENSER

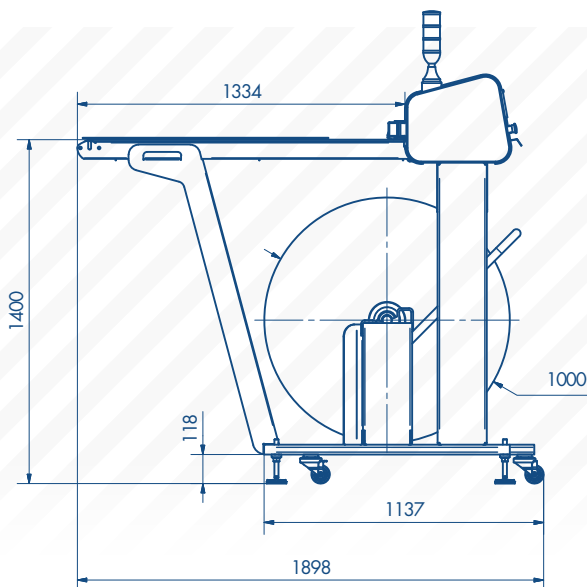
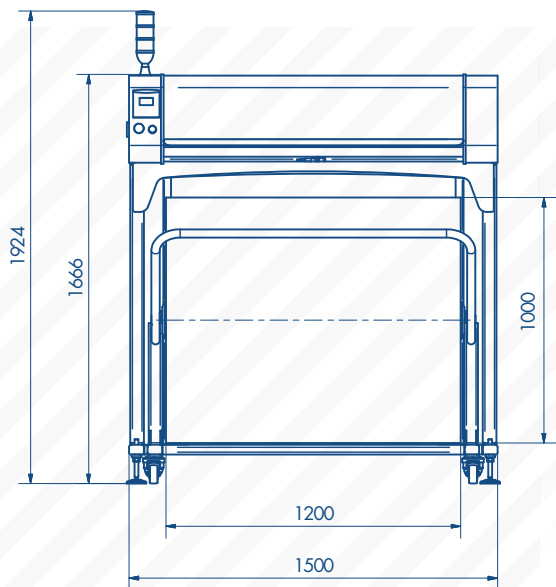
## CLASSIC|1200 MONO|DUO|QUATTRO

PAPER SHEETER TO BE INTEGRATED INTO PALLETIZING LINE  
WITH TROLLEY

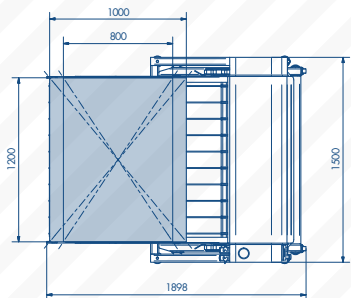
*Stand-alone or driven-mode sheeting of 1200x800 mm & 1200x1000 mm sheets  
Half- and quarter-sheets versions*



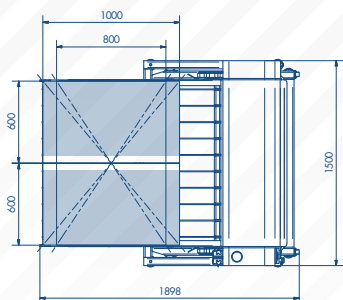
# MODEL CLASSIC | 1200



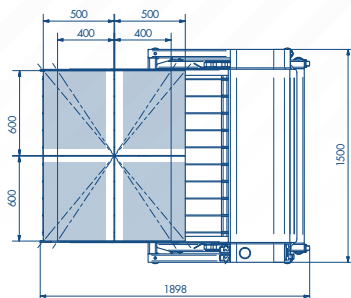
## VERSION MONO



## VERSION DUO



## VERSION QUATTRO



## TECHNICAL SPECIFICATIONS

|                        |  |
|------------------------|--|
| Roll width             | 1200   |
| Roll diameter          | 1000 mm  |
| Sheeting length        | From 600 mm to 1220 mm                                     |
| Cutting accuracy       | ± 1 mm   |
| Number of sheets       | MONO : 1   |
|                        | DUO : 1 or 2   |
|                        | QUATTRO : 1, 2 or 4  |
| Data base              | 15 pre-programmed references                               |
| Tie-sheet position     | Centered or Sheet edge                                     |
| Position accuracy      | ± 1 mm   |
| Paper type             | From 60 to 300 g/m <sup>2</sup>                            |
|                        | Kraft & anti-slip paper                                    |
| Through-put speed      | 6 sheets / minute  |
| Operating mode         | Stand-alone or driven-mode                                 |
| Power supply           | 115V / 230V~50-60 Hz                                       |
| Guarantee              | 500 000 cuts or 12 months                                  |
| Knife lifetime         | 500 000 cuts   |
| Counter-knife lifetime | 500 000 cuts   |
| Roll holder trolley    | To simplify and anticipate roll changeover                 |
| Roll monitoring        | Continuous monitoring of roll diameter with operator alarm |
| Long-life tooling      | High hardness steel of the knife & counter-knife           |
| HMI Access control     | 2 access levels (100 % customizable)                       |



Health & safety conformity :  
Directive 2006/42/CE  
(Normes EN 12100/EN 14121)



TECHNICOAT  
*Solution*

solution@cgp-coating.com - www.cgp-coating.com

