

PALOMAT[®] Adjustable

Efficient pallet flow - no manual lifting of pallets

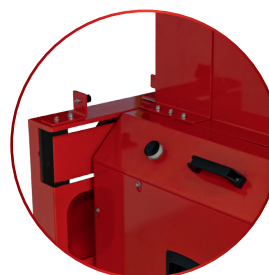
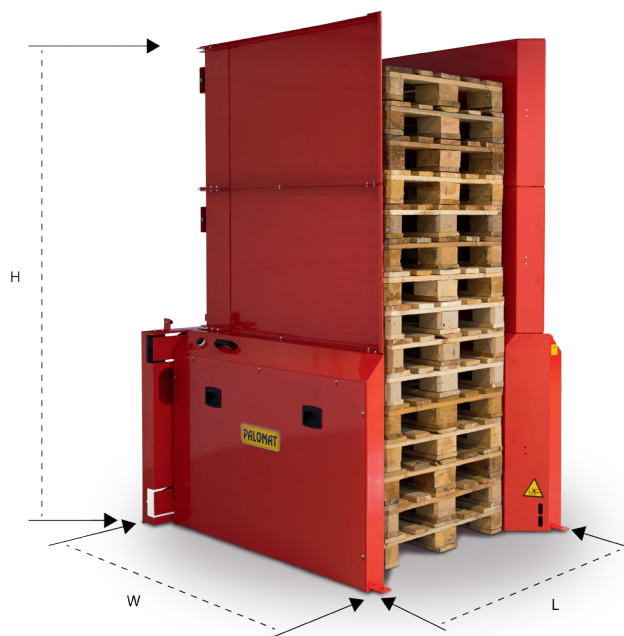
2 pallet sizes in one and same pallet magazine

With PALOMAT[®] Adjustable, you can handle 1200x800 mm and 1200x1000 mm pallets in one and same magazine. The shift between the two pallet sizes takes approximately 5 seconds – a light press on a button plus a manual push or pull in the pallet magazine's left side, which will afterwards adjust.

You insert or remove the pallets using a hand pallet truck, electric stacker or a full-size forklift truck. All handling is carried out at floor level. The PALOMAT[®] Adjustable detects the pallets via photo sensors after which they are fully automatic stacked or destacked one by one.

When selecting destacking, a stack of no more than 15 will be inserted in the PALOMAT[®], after which the pallets are fully automatic destacked one by one. When selecting stacking, the pallets are inserted one by one, after which the pallets are fully automatic stacked to no more than 15 pallets. The entire stack can subsequently be removed.

PALOMAT[®] Adjustable is fully automatic and only operated manually using the touch panel when there is to be a change between stacking and destacking or vice versa.



With an adjustable left side



Your benefits with PALOMAT[®]

- Space saving and a tidy workplace
- Optimised pallet flow
- Improved work environment
- Reduced pallet costs
- Increased efficiency
- No manual pallet handling
- Less absence due to illness
- Reduced time spent per pallet
- Fewer back injuries, jammed fingers and feet
- Less truck driving
- Leaner – increased efficiency with less resources
- 2 in 1 - 2 pallet sizes in the same magazine

Model				
Article no.	Machine dimensions L x W x H (mm)	Pallet size L x W x H (mm)	Lifting capacity	No. of pallets
150060	1520x1550x2350	1200x800x150 / 1200x1000x150	500 kg	15 pallets

* Incl. a safety frame for 15 pallets, which is required

Technic	
Power source	Consumption
Compressed air 6-7 bar + 100-240V AC, 50-60 Hz	36 litres per cycle

Control: Siemens S7-1200
Pneumatics: SMC

Standard colours: RAL 3002 red, RAL 5002 blue, RAL 7032 grey and RAL 7035 grey

You can read more about PALOMAT[®] Flexomatic, options, technical data etc. on www.palomat.com

